



SAINT MARTIN'S UNIVERSITY

2011 ANNUAL SECURITY AND ANNUAL FIRE SAFETY REPORT



In compliance with the *Jeanne Clery Disclosure of Campus Security Policy and Campus Crime Statistics Act (34 CFR 668.46(b))*

2011 ANNUAL SECURITY AND ANNUAL FIRE SAFETY REPORT

TABLE OF CONTENTS

ANNUAL CAMPUS CRIME STATISTICS

Introduction	4
Public Safety Mission and Goals	5
Authority and Jurisdiction	6
Procedures for Reporting Crimes or Emergencies	7
Pastoral and Professional Counselors Reporting of Crimes	8
Timely Warnings and Emergency Notification	8
Preparation and Disclosure of Crime Statistics	9
Access to Facilities	9
Immediate Emergency Response and Evacuation Procedures	10
Security Awareness and Crime Prevention Programs	14
Alcohol and Other Drugs Policies	15
Sexual Violence/Sexual Harassment Policy	18
Registered Sex Offender Information	22
Missing Student Notification Policy and Procedure	23

ANNUAL FIRE SAFETY REPORT

Residence Hall Fire Safety Reporting	24
Description of Student Housing Fire Systems	24
Fire Safety and Residence Housing Fire Safety Regulations	24
What to Do in Case of Fire	25
Fire Response Do's and Don'ts	26

APPENDICES

APPENDIX 1 – DEFINITIONS	27
APPENDIX 2 – 2008 TO 2010 CLERY CRIME STATISTICS	30
APPENDIX 3 – STUDENT HOUSING FIRE DETECTION & SUPPRESSION SYSTEMS	31
APPENDIX 4 – 2010 TOTAL NUMBER OF FIRES BY RESIDENCE HALL	31

INTRODUCTION

The Saint Martin's University 2011 Annual Security and Fire Safety Report contains the *Jeanne Clery Disclosure of Campus Security Policy and Campus Crime Statistics Act* annual report, containing crime statistics and statements of security policy, along with the required *Annual Fire Safety Report*. As such, this 2011 report includes campus safety policy statements, the campus *Clery Act* crime statistics for calendar years 2008-2010 and the campus residence hall fire safety policies, residence hall fire protection equipment and residence hall fire incident statistics for calendar year 2010.

Originally known as *The Campus Security Act of 1990* (20 U&SC § 1092(F)) the *Clery Act* is the landmark federal law requiring colleges and universities to disclose information about crime on and near their campuses. The law is tied to federal student financial aid programs so it applies to most institutions of higher education, public or private. In 1998 the federal law was renamed *The Jeanne Clery Disclosure of Campus Security Policy and Campus Crime Statistics Act* in honor of Jeanne Clery who was raped and murdered on April 5, 1986 while in her residence hall room at Lehigh University. Jeanne's killer was a Lehigh University student with a history of alcohol and drug abuse – they had never met. The killer gained access to Jeanne's room by moving, unopposed, through three propped-open doors, which should have been locked. He was captured, tried and convicted, and sentenced to death.

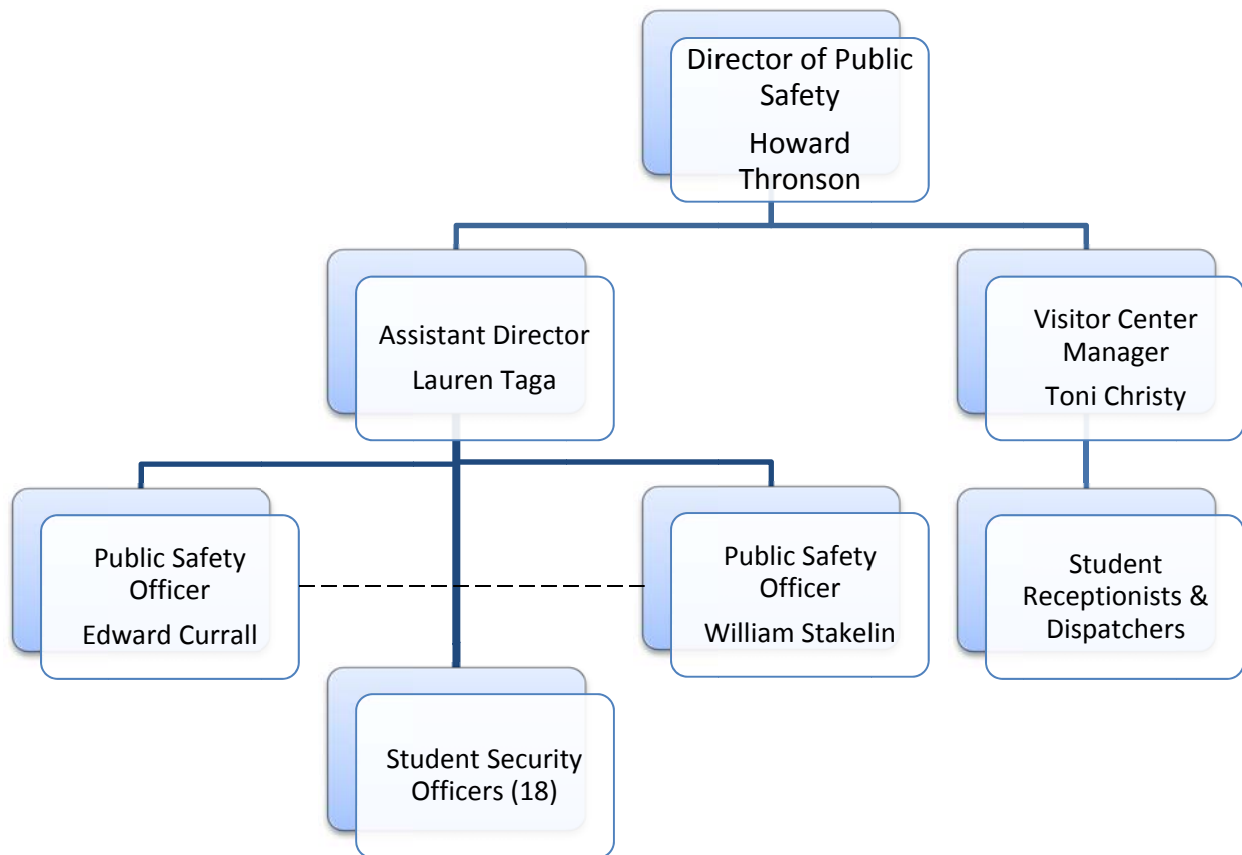
Each year, by October 1st, Saint Martin's publishes its Security and Fire Safety Report. The report is made available automatically to all current students and employees while prospective students and employees are to be notified of its existence and afforded an opportunity to request a copy. Saint Martin's also publishes the report on the Internet and paper copies are available upon request from the Office of Public Safety, Old Main Room 251. A copy of the annual statistics is also provided to the U.S. Department of Education.

ANNUAL SECURITY REPORT

I. PUBLIC SAFETY MISSION AND GOAL

The Office of Public Safety exists to insure the health and welfare of the campus community. It exists to provide a safe environment for the faculty, staff and students with a goal of enhancing the quality of the educational experience at Saint Martin's University by creating and maintaining a safe environment and providing for the security of the entire campus community.

ORGANIZATION



Office of Public Safety Hours

The Office of Public Safety is open 24-hours per day/7-days per week.

Services Provided – Include but are not limited to:

- Personal safety escorts

- Lost and Found
- University identification card issuance
- Vehicle parking permit registration
- Parking enforcement and traffic control
- Event security
- Key and card access
- Sex Offender notification
- Timely Warning Notification
- Crime Prevention education
- Security Patrol
- Basic First Aid response
- Liaison with local law enforcement
- Response to criminal activities
- Emergency response and emergency incident management

II. OFFICE OF PUBLIC SAFETY AUTHORITY AND JURISDICTION

The Office of Public Safety at Saint Martin's University is comprised of a Director, an Assistant Director and two full-time Public Safety Officer. Day-to-day campus security is augmented by 17 to 20 Student Security Officers who work shifts providing coverage 24-hours per day/7-days per week.

The Office of Public Safety full-time staff and student officers are non-commissioned, unarmed, Public Safety personnel functioning totally for the benefit of the University and Saint Martin's Abbey while working on the University campus. Public Safety personnel do not possess arrest powers and, as needed, will contact the Lacey Police Department for law enforcement assistance. Under Washington law, Public Safety personnel can affect a citizen's arrest for a misdemeanor offense if the offense occurs on campus and: (1) was committed in the officer's presence; AND (2) constituted a breach of the peace [State v. Gonzales, 24 Wn. App. 437, 439, 604 P.2d 168 (1979); Guijosa v. Wal-Mart Stores, 101 Wn. App. 777, 791, 6 P.3d 583 (2000)]. Public Safety Officers may also, if absolutely necessary, make a citizen's arrest for an offense classified as a felony occurring on campus [State v. Malone, 106 Wn.2d 607, 724 P.2d 364 at FN1 (1986) *citing* State v. Miller, 103 Wn.2d 792, 698 P.2d 554 (1985) and State v. Gonzales, 24 Wn. App. 437, 604 P.2d 168 (1979)].

Saint Martin's University maintains a strong working relationship with the Lacey Police Department and Lacey Fire District 3. The police department is located just minutes away from the upper campus in the 400 block of College Street SE. Lacey Fire District 3 is located immediately south of the University's Pacific Avenue entrance to campus. Public Safety has

direct radio communications ability with Thurston County Emergency Management and other emergency response agencies over three different radio frequencies. During an emergency, Public Safety also has “car to car” radio capabilities with the Lacey Police Department on a City radio frequency.

Saint Martin’s University does not have a written agreement or Memorandum of Understanding with the Lacey Police Department for the investigation of alleged criminal offenses on campus. The City of Lacey police as a Washington State General Law Enforcement Agency, defined in Chapter 10.19 RCW, have full law enforcement jurisdiction for all criminal offenses committed on the University Campus.

III. GENERAL PROCEDURES FOR REPORTING A CRIME OR EMERGENCY

All crime victims and witnesses are strongly urged to immediately report any crime to the Lacey Police Department and to Saint Martin’s Public Safety. Prompt reporting will assist in timely warning notices being issued to the campus community, when warranted, and accurate collection and disclosure of crime statistics.

Reporting an Incident:

1. If it is a life threatening emergency or criminal activity, please call 911 first to get Lacey Police or Lacey Fire District 3 response. Dial 9-911 if calling from any campus phone.
2. To report any suspicious activity or crime occurring on campus contact the Saint Martin’s University Office of Public Safety office at 360-438-4555, or extension 4555 from any campus phone. If you feel the situation warrants a police response call 911.
3. Blue-Light Emergency phones are located in several locations on campus (the Parsons Hall parking lot, in front of the softball field on Baran Drive, in front of Jan Halliday Memorial Plaza on Baran Drive and in the Lynch Faculty/Staff parking lot) and Yellow Emergency Phone call boxes located at outside and around each Residence Hall. All emergency phones provide direct contact with Thurston County 911 by pushing the red buttons on these emergency phones. An emergency phone is also located in the wall by the front doors to the Hal and Inge Worthington Center.

The *Clery Act* requires the institution to disclose the titles of each individual or organization on campus, in addition to the Office of Public Safety, designated as a Campus Security Authority. These people are identified because of their significant responsibility for student and campus activities. The Campus Security Authority has an obligation to report crime statistics for inclusion in the University’s Annual Security Report.

Students and employees can report any criminal incident to any of the following designated Campus Officials:

- | | |
|--|-----------------------|
| 1. Dean of Student Affairs | 360-438-4367 |
| 2. Athletic Director or any coach | 360-438-4368 |
| 3. Director of Housing and Residence Life, | 360-486-8856 |
| 4. Residence Hall Directors | |
| or any Residence Hall Advisor | 360-486-8875/438-4546 |
| 4. Director of Campus Life | 360-438-4577 |
| 5. Director of Human Resources | 360-486-8131 |
| 6. Director of Disability Support Services | 360-438-4580/4569 |
| 7. Director of Career Services | 360-486-8842 |
| 8. Director of OIPD | 360-438-4598 |

IV. PASTORAL COUNSELORS AND PROFESSIONAL COUNSELOR POLICY ON REPORTING OF CRIMES

Title 20 USC Section 1092(f) has excluded “Pastoral Counselors and Professional Counselors” from the definition of a Campus Security Authority. As a matter of policy these counselors, when they deemed appropriate, will provide the persons being counseled of the University’s procedures to report crimes on a voluntary basis for inclusion into the annual crime statistics.

V. TIMELY WARNINGS AND EMERGENCY NOTIFICATION

The *Clery Act* requires the campus community be alerted of dangerous situations in a timely manner. In situations where *Clery Act* crimes are reported to a Campus Security Authority or the local police and are considered by Saint Martin’s to represent a serious or continued threat to students or employees, a security advisory may be issued as soon as all necessary pertinent information is available to assist in determining if the incident represents a threat to students and employees. The security advisory or “Timely Warning” will be issued utilizing the University email system and, in some situations, the University web page and Facebook. In some

instances, a copy of the notice will be posted in each residence hall and placed in other conspicuous places. Anyone with information warranting a timely warning should report the circumstances to Public Safety by phone (360) 438-4555 or in person at the Public Safety Office located in Old Main, Room 251.

VI. PREPARATION AND DISCLOSURE OF CRIME STATISTICS

Saint Martin's publishes and distributes an annual security report. The report includes campus crime statistics and University's policies required by the *Clery Act*. The crime statistics posted are for the past three years of compiled offenses, required by the *Clery Act*, occurring on or near the campus. The statistics are broken down and listed by physical location, such as On Campus, In Residence Halls, On Public Property and On Non Campus Properties used by Saint Martin's.

The Annual Report includes policy statements and program descriptions pertaining to campus security and specifically to sex offenses. A paper copy of the report is available upon request through:

Office of Public Safety
Old Main, Room 251
Saint Martin's University
5000 Abbey Way SE
Lacey, WA 98503

Phone: (360) 438-4555

Fax: (360) 459-4124

Email: security@stmartin.edu

The annual security report is also available on line at:

<http://www.stmartin.edu/Security/CleryAct/AnnualReportAndFireSafety.pdf>

VII. ACCESS TO FACILITIES POLICY

During business hours, the University (excluding resident housing facilities) is open to people deemed to have lawful business on campus, such as students, parents, employees, contractors, vendors, guests, and invitees. During non-business hours, access to all University facilities is obtained only by prior permission from an authorized University official.

Residence Halls are secured by electronic locks 24 hours a day. Doors can only be unlocked by persons having those specific door credentials. Over extended breaks (mid-semester, holiday, etc.) the Residence Halls are restricted to only those students authorized to remain in residence

housing during breaks; student not authorized to be in residence housing have their access to buildings disabled until school reopens.

Security of all facilities during normal business weeks and during extended breaks will be at the discretion of respective Building Manager or other University officials. For example, continuing education class in Harned Hall may occur during Spring Break. Faculty conducting classes in the building are responsible to coordinate access to the building with the Building Manager and Public Safety since Harned Hall is not normally accessible during Spring Break.

Emergencies may necessitate changes to regular building access schedules. University officials such as the University President, VP- Academic Affairs, Dean of Student Affairs, Director of the Office of Public Safety, Director of Housing and Residence Life, and the Facilities Director may review security concerns and adjust building access as needed.

Security surveys are used to obtain information and input on such issues as landscaping, door and window locks, alarms, lighting, and communications. During the academic year, program Directors meet regularly with each other to discuss and address relevant security and access concerns.

VIII. CAMPUS POLICY REGARDING IMMEDIATE EMERGENCY RESPONSE AND EVACUATION PROCEDURES

Purpose

The purpose of this procedure is to outline and identify the process to be used to immediately notify the campus community upon the confirmation of a significant emergency or dangerous situation involving an immediate threat occurring on campus to the health or safety of students or employees.

Procedure

Using all information available, Public Safety will confirm there is a significant emergency or dangerous situation. A determination of the affected area will be made and a decision regarding the content of a message developed. Initiation of the Emergency Notification Process will begin. The Office of Public Safety and/or the Marketing and Communications Office will issue alerts via e2Campus™ web-based unified emergency notification system for text messaging and streaming, Saint Martin's email and the SMU Home Page. Additional notification methods include wide-area broadcasts through strategically located WEBS® blue-light emergency phone towers. Updates and subsequent information to the broader Saint Martin's community will be coordinated through the Office of Marketing and Communications.

Reporting Emergencies

Emergencies should be reported the Lacey Police Department or Lacey Fire Department by calling 9-911 from any campus phone, 911 from cell phones or non-campus phones or by

pushing the emergency phone button on the blue light emergency phones or yellow emergency call boxes, which are available at various locations on campus. Saint Martin's University Office of Public Safety can also be notified of any emergency by calling extension 4555 from any campus phone or 360-438-4555. Thurston County 911 will notify Saint Martin's University of any significant emergency reported to them via a 911 call.

Responsibility for Emergency Response and Notification

- A. Typically, the Office of Public Safety is responsible for providing immediate emergency response to and investigating reported emergencies occurring on campus reported through the University switchboard or as passed on by Thurston County 911. The Lacey Police Department is responsible for responding to and investigating reports of criminal activities occurring on campus when reported through Thurston County 911 or at the request of the University. Saint Martin's will initiate and provide assistance to responsible agencies and departments for other types of emergencies occurring on campus.
- B. Once a confirmed significant emergency or dangerous situation involving immediate threat to the health or safety of students or employees is occurring on campus, the campus community will be notified unless Public Safety determines and pronounces issuing an immediate notification would place the community at greater risk or would compromise efforts to contain the emergency. Any delay in notification will be for as short a time as possible. It is anticipated the initial notifications will be the responsibility of Public Safety. However, it is recognized any number of situations may cause this responsibility to fall to the Office of Marketing and Communications or other designated University officials. Additional messages may be released as the incident or situation dictates and as time permits. In situations where the initial emergency notification was made by Public Safety, the Office of Marketing and Communications has the responsibility for broadcasting further messages to the Saint Martin's community. The Director of Public Safety, or designee, will notify the Office of Marketing and Communications (or other designated University official) of the incident and notify them when Public Safety has transferred responsibility for notifications to them.
- C. The initial message will usually be brief and direct so as to notify the community whether to seek shelter, lock doors, avoid or evacuate a location(s) or take other action as needed. Any of the following emergency communications, as well as others as deemed appropriate, will be utilized depending on the type and nature of the emergency:
 - a. Talk-a-Phone Blue Light Wide Area Emergency Broadcast System (WEBS®) Towers – used for emergency phones and wide-area emergency broadcasts. The WEBS can be activated from a remote location and activate all or specific towers to provide alerts or local announcements during sudden emergencies such as hazardous materials incidents or active shooters.

- b. University's e2Campus emergency text messaging system.
 - c. University's email account, web page and facebook.
 - d. In-person communications by one individual to another person or group of persons.
- D. Public Safety and the Office of Marketing and Communications will test the notification systems no less than annually.
- E. At a minimum this policy will be publicized as follows:
- a. Annually in the Campus Security Report
 - b. At <http://www.stmartin.edu/alerts/>
 - c. New Student Orientation
 - d. Publication in the Saint Martin's Emergency Response Plan

Other Response Efforts

- A. Depending on the nature of the reported emergency, Public Safety will notify the Office of Housing and Residence Life when to implement its emergency protocols, such as "active shooter protocols" for residence halls.
- B. Depending on the nature of the reported emergency, Public Safety will initiate the securing of buildings, either electronically or by notifying other University officials and departments, such as Facilities (Custodial, Maintenance, and Grounds) personnel, requesting they secure the exterior doors to buildings.

Emergency Response Protocols

Lockdown Purpose

The purpose of a lockdown is to secure students, faculty, staff and visitors into the nearest secured facility and minimize their exposure to a potential threat. The lockdown plan, when implemented, serves to minimize the risk of injury for those in a building or classroom at the time of a threat. The following events are some examples of when a lockdown might be activated.

- Active Killer/Shooter incident;
- Police in the area looking for a violent offender;
- A violent crime occurs near the campus where the suspect(s) may pose a risk to the campus community;
- Reported use of a weapon in a workplace on campus; or
- Any serious threats to staff or property requiring the lock down of a building or the campus.

Evacuation Purpose

Purpose of an evacuation is to remove the students, faculty, staff, and visitors as far away as possible from an identified threat on campus. The evacuation process is designed to follow the concepts of a fire evacuation and result in the orderly safe removal of all persons from facilities

on campus and the campus proper when practicable. Fleeing from an identified threat in a safe manner is an acceptable response to an Active Killer/Active Shooter situation when the threat is not immediate.

Requirements for Lockdown/Campus Evacuation

In order to be successful, a lockdown/evacuation crisis response plan requires the participation of all employees. Successful implement is necessary to mitigate the risk of injury or loss of life to those affected by the threat. Therefore, all employees must know what the plan is and the role they play in carrying out the plan. The plan needs to be known by local law enforcement and other first responders for their safe tactical response. The implementation of the lockdown crisis response plan must be practiced.

Definitions

ACTIVE KILLER INCIDENT – An active killer incident is any situation where the suspect(s), or active killer, is attempting to enter, or has entered, any workplace, room or other facility or institution and is actively attempting to cause death by whatever means available to the occupant's present. Means to kill can include, but are not limited to, the use of firearms, energetic materials such as bombs, improvised explosive devices (IEDs), edged weapons (knives, swords, machetes), fire, blunt weapons, explosive gases, liquids, electrical devices or energy, or any other item used with the intent to cause death. This type of situation dictates an immediate and possibly lethal response by law enforcement personnel to contain, capture or neutralize the Active Killer threat.

LOCKDOWN - A lockdown is a pre-set and rehearsed crisis response plan implemented by the University to minimize and mitigate a potential lethal threat to members of the campus community. A lockdown is activated once there is an actual or perceived threat of harm to students, faculty, staff and visitors. A lockdown consists of locking or barricading exterior and/or interior doors of a building to prevent an intruder from gaining access to the building or to rooms where occupants are located. The occupants of a room/building take a defensive position inside rooms to avoid being seen or found by an intruder posing a threat. The object is to prevent the threat from gaining access to rooms where people are located.

MODIFIED LOCKDOWN – A modified lockdown can be employed when a threat is known to be outside the workplace and incorporates the same implementation procedures as a lockdown. In a modified lockdown building occupants may walk around the interior of the building and continue their daily operations except no one may enter or leave the effected building until the threat is cleared. This is also known as a targeted lockdown. Because this usually involves a lesser threat concern on campus, officers can be posted outside of the affected area of the campus to deter the potential threat.

EVACUATION – Evacuations are an important part of a lockdown procedure where extreme acts of violence in a building lead potential victims to either lockdown or evacuate, depending on how close they are to the threat at the time. Evacuating a building to a safe location should occur when safe to do so if locking down is not a viable and safe option. Most evacuations will take place when a building or floor is notified in person by Public Safety or the police it is safe to

evacuation. People who evacuate should leave a building going in the opposite direction of an identified threat area and leave to a safe location completely away from the campus proper.

Lockdown Procedure

- Prior to closing and locking the door to the room you are in, carefully look out of the door and gather any non-threatening persons into your room.
- Close, barricade or lock the door.
- Cover any door window, if possible, to prevent the Active Killer from seeing into the room.
- Cover wall windows if able.
- Kneel, squat, or lie down on the floor and against the wall on the door side of the room. Keep very quiet.
- Silence cell phones. Have at least one person call 9-1-1 and stay on the phone with dispatchers.
- Have someone take a silent role of those persons with you to help account for people.
- Only leave the room when clearly told the lockdown has ended and it is safe to evacuate.
- If law enforcement advises they are coming into the room lay flat on the floor and keep your hands out at your sides in plain sight. Law enforcement will be searching for the Active Killer or accomplices.
- Be prepared to be interviewed by law enforcement before being released.
- If the fire alarm sounds during a lockdown DO NOT EVACUATE unless there is some assurance a fire exists as it may be a false alarm sounded to expose people from secure locations.

Evacuation Procedure

- Upon notification of a significant emergency event evacuating a building to a safe location should occur when safe to do so, if locking down is not a viable and safe option.
- Persons evacuating a building should leave the University Campus immediately, as far away as possible and notify 911 of the emergency.
- Do not evacuate to designated fire assembly points unless directed to do so by a university official or Public Safety.

IX. SECURITY AWARENESS AND CRIME PREVENTION PROGRAMS

During Early Registration and Orientation, in July and August, students and parents are informed of the services offered by Department of Public Safety. Information provided during this time includes but is not limited to: the current 3-year Clery Crime Statistics, property theft and prevention information, renters insurance, Washington State domestic violence act information and arrest requirements, sexual assault and date rape information, alcohol and drug policies and state law.

Crime prevention programs on personal safety and personal property theft prevention are presented throughout the year. Department of Public Safety presents information on how students and employees may protect themselves in the event of a physical or sexual assault, burglary, thefts, and other acts of crime and violence periodically. Identify theft information is made available to students. Saint Martin's Office of Public Safety urges everyone to enhance their personal safety by utilizing the Office's Personal Safety Escort Service.

When time is of the essence, information is released to the campus community through security alerts posted to all student, faculty and staff email accounts, on notices posted on informational bulletin boards, and, if the situation warrants, through the emergency text alert system e2Campus.

X. ALCOHOL AND OTHER DRUGS POLICIES

Saint Martin's University is committed to a safe and secure environment free of Alcohol and Other Drug (AOD) abuse and maintains this commitment in support of academic success, work performance, well-being, and quality of life for all members of its community. It is the conviction of Saint Martin's University that the education of the mind, body, and soul are of the utmost importance. Alcohol and other drugs have been shown to adversely affect this ideal. The University is committed to substance abuse prevention, education, and assistance.

Saint Martin's University provides: Information about alcohol and other drugs and the associated risks of use; appropriate intervention when alcohol and other drug use creates unwanted or unintended consequences; and, support for reducing the risk of consequences associated with alcohol and other drug abuse.

Alcohol Policy Specific to On-Campus Residence Housing

Possession, consumption, possession by means of consumption (if under the age of 21) and the sale of alcoholic beverages, is prohibited in or around University-owned or University-controlled housing. Empty alcohol containers are similarly prohibited. Additionally, students found in the presence of alcohol or in violation of other Housing and University policies due to alcohol consumption constitutes a violation of this policy. Incidents are sanctioned depending on the scope and severity of the alleged violation. Reports regarding violations of this policy will be referred to the Residence Hall Director, Director of Housing and Residence Life, the Student Conduct Committee or the Dean of Student Affairs. Possible sanctions include but are not limited to:

- Referral to and required completion of an alcohol education program at the student's expense through the Office of Housing and Residence Life in coordination with the Counseling and Wellness Center; mandatory residence hall probation. Students who fail to comply with the sanction may be assessed a disciplinary fine and be required to attend a rescheduled class.
- Referral to and required completion of a substance abuse assessment and evaluation at the student's expense; mandatory follow-through and completion of recommendations

of the assessment and evaluation. If the student is under 21 the University will notify the parents of this violation via mail. Students who fail to comply with this sanction may be referred to the Student Conduct Committee for further disciplinary action.

- Referral to the Student Conduct Committee for a review of the student's status as a student at Saint Martin's University.

University Policy – Alcohol and Drugs

All students, whether on or off campus, must adhere to state and federal law concerning alcohol use and are expected to conduct themselves in a manner consistent with University expectations. The University will not tolerate the unlawful manufacture and/or illegal purchase, consumption, possession, or distribution of alcohol to or by any student.

Possession, consumption, possession by means of consumption, if under the age of 21-years, and the sale of alcoholic beverages is prohibited in or around University-owned or University-controlled property. Exceptions are made if the following conditions are met for a specific event:

- a. Approval for the event is obtained in writing from the director of campus life or the dean of student affairs; and
- b. The event is not held in or near the residence halls; and
- c. Those consuming alcohol are 21-years old or older; and
- d. An appropriate liquor license is obtained from the Washington State Liquor Control Board and publicly displayed; and
- e. If required by the liquor license, a bartender licensed by the State of Washington serves the alcohol.

State and federal laws prohibit the unlawful use, manufacture, possession, consumption, control, sale, and dispensation of any illegal narcotic or dangerous drug. These laws carry penalties for violations, including monetary fines and imprisonment. The unlawful manufacture, possession, consumption, control, sale and dispensation of illegal drugs or other controlled substance is strictly prohibited in or around University owned or controlled property. These substances may include, but are not limited to, stimulants such as amphetamines or cocaine, depressants such as barbiturates or tranquilizers, cannabis such as marijuana or hashish, hallucinogens such as LSD or ecstasy, narcotics such as heroin or morphine and various inhalants. The only exception to the policy is controlled substances prescribed and used as directed by a physician.

As stated in the Standards of Conduct, actions detrimental to the mission of the University and to the legitimate activities of the academic community are a violation of the code of conduct. Disorderly, lewd, indecent or any other conduct resulting from the misuse of alcohol or drugs interfering with the mission of the University or with any legitimate activities of the academic community will be subject to the disciplinary process.

The University may, at its discretion, require alcohol and other drug education training for any group, club, team or living arrangement as necessary.

Any student who violates the *Code of Conduct* as it relates to alcohol and drug use is subject to sanctions as outlined therein. These sanctions can be in addition to any penalty imposed by a court for the violation of state or federal law.

AVAILABLE DRUG AND ALCOHOL PROGRAMS AND REFERRAL SOURCES

(counseling, treatment, rehabilitation, and re-entry) available to employees or students include:

ON CAMPUS:

* SMU Counseling Center: 360-438-4371

* SMU Substance Abuse Prevention Program Coordinator, Jason Kilmer, Ph.D. 360-438-4513 – available to students for evaluations, consultations, and counseling; faculty or staff may contact Dr. Kilmer for any questions or referrals

OFF CAMPUS:

Northwest Resources

2708 Westmoor Court SW

Olympia, WA 98502

360-943-8810

428 W. Birch St, Suite 14B

Shelton, WA 98584

360-426-0890

South Sound Clinic – Evergreen Treatment Services

6700 Martin Way East, Suite 117

Olympia, WA 98516

360-413-6910

Alternatives Professional Counseling

203 4th Ave E., Suite 301

Olympia, WA 98501

360-357-7986

Providence St Peter Chemical Dependency Center

4800 College St SE

Lacey, WA 98503

360-456-7575

The Right Step, Inc

801 Sleater-Kinney Rd SE, Suite 20

Lacey, WA 98503

360-923-9585

Olympia Psychotherapy, Inc

1408 State Ave NE, Suite 110

Olympia, WA 98506

360-352-3034

Additional Resources

- * BHR Recovery Services: 360-704-7170.
- * Safeplace: 360-754-6300: Provides a 24-hour sexual and domestic violence helpline.
- * The Crisis Clinic: 360-586-2800: Provides a 24-hour crisis line and referrals to providers in the area.
- * Alcohol/Drug Use 24-hour Help Line: 1-800-562-1240
- * Washington State Alcohol/Drug Clearing House: 1-800-662-9111

SUPPORT GROUPS:

- * Alcoholics Anonymous (AA): 360-352-7344.
- * Alanon: 360-352-7745 (support for those affected by the alcohol use of a friend or family member).
- * Narcotics Anonymous (NA): 360-754-4433.

XI. Sexual Violence/Sexual Harassment Policy

STATEMENT OF INTENT

Sexual violence and sexual harassment are not tolerated within our community. Forms of sexual violence and sexual harassment are crimes punishable by both civil and criminal legal action and are a serious violation of the University's standards of conduct. Sexual harassment includes sexual violence. Sexual violence includes rape, sexual assault, sexual exploitation, sexual battery, and sexual coercion. Allegations of such behavior will be investigated and acted upon on campus, regardless of where it occurred, and all reports will be reviewed by the University's Title IX Coordinator. If you feel that you have been a victim of sexual violence or sexual harassment, please read the policy section below on "What to do if you've been raped, sexually assaulted, harassed, coerced or exploited," for help, options, and possible remedies.

1. Proscribed Behavior and Definition of Terms

- a. Effective consent: Informed, freely and actively given or mutually understandable words or actions, that indicate a willingness to participate in mutually agreed-upon sexual activity. Consent may never be given by:
 - i. Minors to legal adults (statutory rape).
 - ii. Developmentally disabled persons
 - iii. Physically incapacitated person (one who is physically incapacitated as a result of alcohol or other drug consumption – voluntary or involuntary – who is unconscious, unaware or otherwise physically helpless).
- b. Rape: Rape is defined as any sexual intercourse (vaginal, oral or anal), however slight, with any object by a man or a woman upon a man or woman, by forcible compulsion or without effective consent (please read above).

- c. **Sexual Assault:** Sexual assault is defined as any sexual touching, however slight, with any object, by a man or a woman upon a man or woman, without effective consent (please read above).
- d. **Sexual Coercion:** Sexual coercion is an act of using pressure or force to have sexual contact with someone who has already refused.
- e. **Sexual Exploitation:** Sexual exploitation is defined as one person taking non-consensual, unjust or abusive sexual advantage of another that does not otherwise constitute rape, sexual assault or sexual harassment. Examples of sexual exploitation include knowingly transmitting a socially transmitted disease or HIV to another person or inducing incapacitation with the intent to rape or sexually assault another.
- f. **Sexual Harassment:** Sexual harassment includes, but is not limited to, unwelcome sexual advances, requests for sexual favors, and other verbal or physical conduct of a sexual nature when this conduct explicitly or implicitly affects an individual's education or employment, unreasonably interferes with an individual's educational or work performance, or creates an intimidating, hostile, or offensive educational or work environment. Sexual harassment can occur in a variety of circumstances, including but not limited to the following:
 - i. The victim as well as the harasser may be a woman or a man. The victim does not have to be of the opposite sex.
 - ii. The harasser can be the victim's instructor, supervisor, an agent of an employer, a supervisor in another area, a co-worker, a student, or a non-employee.
 - iii. The victim does not have to be the person harassed but could be anyone affected by the offensive conduct.
 - iv. Unlawful sexual harassment may occur without economic injury to or discharge of the victim.
 - v. The harasser's conduct must be unwelcome.

It is helpful for the victim to inform the harasser directly that the conduct is unwelcome and must stop. The victim is encouraged, but not limited, to use any SMU complaint mechanism. When investigating allegations of sexual harassment, the institution will examine all evidence of the incident. A determination on the allegations is made from the facts on a case-by-case basis.

2. Steps To Take If You've Been Raped, Sexually Assaulted, Harassed, Coerced, or Sexually Exploited

- a. **Tell someone.** It is important that you find someone you trust to talk with about what has happened. You probably will feel stunned and confused, and you will need

- support, understanding and assistance. Don't isolate yourself. On campus, you can visit the Counseling and Wellness Resource Center in OM room 203 (360-438-4513/4371). If you don't feel comfortable talking to someone face to face, you can use any of the following services over the phone.
- i. The Crisis Clinic, 360-586-2800, (information/referral to community resources)
 - ii. St. Peter Hospital, 360-491-9480
 - iii. SafePlace (rape relief/women's shelter), 360-754-6300
 - iv. Domestic Violence Hotline, 1-800- 562-6025
- b. You are encouraged to report any incident of sexual violence to the police. You can report what has happened to the local police without taking legal action against the assailant. You also can contact the local police department to press either civil or criminal charges.
 - c. Get medical attention within 72 hours. Any hospital emergency room can provide you with necessary care including, but not limited to sexually transmitted disease/infection (STD/I) testing and a rape kit. Locally, St. Peter's Hospital will perform examinations free of charge in cases of sexual violence. Remember, you should seek medical attention BEFORE you shower or even eat, drink or smoke.
 - d. Conduct may constitute a violation of University policy even if it would not constitute criminal activity; therefore you are encouraged to report any incident which you believe may be an act of sexual violence or sexual harassment on campus whether or not law enforcement authorities have been contacted. Several different options are available to you to report what happened. You can report to the Dean of Students (360-438-4367), Director of Housing and Residence Life (360-486-8856), Director of Public Safety (360-486-8876), or the University's Title IX Coordinator (360-486-8131). After normal business hours, you may contact Public Safety (360-438-4555) or the on-call Housing staff (360-507-2511/2512) for assistance. University personnel will be available to assist you should you choose to report the incident to law enforcement.
 - e. While promptness in reporting is desirable, the case may be investigated as long as the alleged perpetrator continues to be a student or employee at the University.
 - f. Depending on the circumstances, some of the possible remedies available to you as a result of reporting the incident to the University include: temporary or permanent no-contact orders, providing escorts to ensure your ability to move safely between classes and other campus activities, removal of alleged perpetrator from classes you both attend, moving to a different residence hall, counseling services, medical service, academic support services, and/or accommodation for re-taking classes without penalty.

3. University Investigation and Resolution of Complaint

- a. Once reported, the University will begin an investigation and, if warranted, initiate disciplinary proceedings in keeping with the Code of Conduct (in cases involving another student) or University grievance procedures (in cases involving staff or faculty). Regardless of the type of complaint proceeding, no form of mediation will be used to resolve sexual violence complaints. Generally, investigations will be completed within 30 days and conduct cases resolved no more than 60 days from the report; however, the University reserves the right to extend the process under reasonable conditions and with appropriate notice.
- b. If you request confidentiality or ask that the complaint not be pursued, the University will take all reasonable steps to investigate and respond to the complaint consistent with your request. The University prohibits retaliation and University officials will not only take steps to prevent retaliation but also take strong responsive action if it occurs. If you insist that your name or other identifiable information not be disclosed to the alleged perpetrator, the University's ability to respond may be limited. If you continue to ask that your name not be revealed, the University will evaluate that request in the context of its responsibility to provide a safe and nondiscriminatory environment for all students. The University may weigh the request for confidentiality against several factors and will inform you if it cannot ensure confidentiality.
- c. Even if the University cannot take disciplinary action against the alleged perpetrator because you insist on confidentiality, it will pursue all other steps to limit the effects of the alleged misconduct and prevent its recurrence.
- d. The University will take steps throughout the process to protect you from further intimidation, harassment, trauma, or retaliation. You will be afforded all rights available to the accused, including the right to review reports and statements, to make an impact statement, to present evidence and witnesses, to be notified of the outcome of the case, to appeal that outcome, if necessary, to be notified of any appeal by the accused, and to be notified of the outcome of any appeal. The University will utilize a preponderance of evidence standard ("more likely than not") in reviewing the case, whether through the Student Conduct Committee, an administrative hearing, or a University grievance body.

RIGHTS OF VICTIMS

A fundamental aspect of the Student Conduct Code is to establish procedures that insure the procedural rights of the accused. However, it is the University's position that victims of misconduct also should have rights. Disciplinary proceedings conducted by the University guarantee the following rights to victims:

- The rights to have a person of his or her own choice accompany him or her throughout the disciplinary hearing, except when a Hearing Committee is in closed session.
- The right to remain present during the entire disciplinary proceeding, except when a Hearing Committee is in closed session.
- The right not to have his or her irrelevant past history or behavior discussed during a hearing. This includes references to past violations of the Student Code of Conduct, past sexual history or past indiscretions of any type.
- The right to make a “student impact statement” during a hearing.
- The right to be informed of the outcome of a hearing as soon as is practical.

XII. REGISTERED SEX OFFENDER INFORMATION

Sex offenders have always lived in our communities and law enforcement has no legal authority to direct where sex offenders may or may not live. Unless court ordered restrictions exist, an offender is constitutionally free to live wherever he or she chooses. However, the Community Protection Act of 1990 requires those convicted of sex offenses must register, with the primary legislative intent, "to assist law enforcement agencies' efforts to protect their communities" by providing relevant and necessary information.

The Thurston County Sheriff and Lacey Police Department releases sex offender information pursuant to RCW 4.24.550. The content of the information made available, as well as where and how the information is disseminated, is restricted to the standards set forth in Chapter 4.24 Revised Code of Washington and by the Washington State Supreme Court ruling in State v. Ward, 123 WA 2d 488 (1994).

The Washington State Legislature has determined the relevant and necessary information disclosed to the public shall be related to: (a) the level of risk posed by the offender to the community; (b) the location where the offender resides, intends to reside, or is regularly found; and (c) the needs of the affected community members for information to enhance their individual and collective safety.

LEVELS OF SEX OFFENDERS - DEFINED

Level I

Low risk to re-offend within the community at large. Information shall be shared with other law enforcement agencies and, upon request, the Sheriff may disclose relevant, necessary and accurate information to any victim or witness to the offense and to any individual community member who lives near the residence where the offender resides, expects to reside, or is regularly found. Level I offenders MAY NOT be the subject of general public notification.

Level II

Moderate risk to re-offend within the community at large. Relevant, necessary and accurate information concerning risk Level II offenders may be disclosed to public and private schools, child day care centers, family day care providers, businesses and organizations that serve primarily children, women or vulnerable adults, and neighbors and community groups near the

residence where the offender resides, expects to reside, or is regularly found. Level II offenders MAY NOT be the subject of general public notification.

Level III.

High risk to re-offend within the community at large. Relevant, accurate and necessary information concerning offenders classified as risk Level III may be disclosed to the public at large.

REGISTERED SEX OFFENDER INFORMATION LINK

The Thurston County Sheriff's Office provides access to the Registered Sex Offender Data Base for Thurston County. By clicking on [Search of Offenders in Your Area](#), and entering Saint Martin's address all registered sex offenders within ½ mile of campus are displayed. Further searches can be conducted from this site for different distances from campus. The Sheriff's web page also contains information on how to register for email alerts, safety tips, links to other resources and how to contact the Thurston County Sheriff's Office.

http://www.sheriffalerts.com/cap_main.php?office=54490

The address for Saint Martin's University is:

5000 Abbey Way SE
Lacey WA 98503-7500

XIII. MISSING STUDENT NOTIFICATION POLICY AND PROCEDURE

Per 34 CFR 668.46(h) and the Higher Education Opportunity Act (P.L. 110-315), Saint Martin's University is required to maintain a missing student notification policy and protocol for on-campus residents.

It is the policy of Saint Martin's University for on-campus residents to identify a confidential contact to be notified within 24-hours if the on-campus resident student goes missing. Further, anyone suspecting an on-campus resident student has been missing for twenty-four hours must immediately notify the Office of Public Safety or the Office of Housing and Residence Life.

Public Safety and Housing and Residence Life will respond to the report of a missing student and begin an immediate investigation. Public Safety's response will include notification to the Lacey Police Department if the investigation confirms the subject student is missing. If the missing student is under the age of 18 and not emancipated, Saint Martin's University will notify the custodial parent or guardian.

A resident student may identify a missing person contact, separate from the Emergency Contact Person if the student chooses. The University will notify this person if it is determined the student has gone missing. Missing Person Contact information will be communicated to Housing and Residence Life staff as part of the Housing Contract application process. All

information provided will be kept confidential and will be accessible only to authorized University officials and law enforcement involved in the missing person investigation.

ANNUAL FIRE SAFETY REPORT

Residence Hall Fire Safety Reporting

In accordance with the Higher Education Opportunities Act of 2008, Saint Martin's University is providing mandatory fire safety information as part of this Annual Report. (Detailed fire data for all on-campus student housing facilities can be found in Appendix 4 at the end of this report). All reports of fires and fire alarm activations are maintained in a database within the Department of Public Safety. Data collected includes, but is not limited to, the building name; alarm location; time and date; the number and cause of each fire; any and all injuries; any fatalities; and dollar values for property damaged by the fire (as assessed by the University).

Description of Student Housing Fire Systems

Every University residence hall has a monitored interior fire alarm system activated by smoke detectors or fire alarm pull stations.

Spangler Hall

Hallways and common areas have smoke detectors, horns and strobes and sprinklers. Student residences have smoke detectors, horns and sprinklers. All residence hall doors have automatic fire alarm closers.

Baran Hall

Hallways and common areas have smoke detectors, horns and strobes and sprinklers. Student residences have smoke detectors, strobes and sprinklers.

Burton Hall

Student residences have smoke detectors, horns and strobes.

Parsons Hall

Hallways and common areas have smoke detectors, horns and strobes and sprinklers. Student residences have smoke detectors, horns and strobes and sprinklers.

Please see Appendix 3 for a list of all student residence halls, their fire suppression and detection systems, and fire drills conducted.

Residence Housing Fire Safety Regulations

Tampering with the sprinkler system, fire alarms, fire extinguishers or other fire safety equipment is prohibited.

Fire drills are conducted each semester. Drills are intended to familiarize residents with the safe and proper exiting procedures and routes to promptly evacuate buildings. All occupants are required to evacuate the building in a timely manner when the fire alarm sounds. Anyone refusing to evacuate is liable for sanctioning and may be suspended from the residence hall. Occupants are not to re-enter buildings until directed to do so by a University official.

Extension cords may not be used as a substitute for permanent wiring. Extension cords should be plugged directly into an approved receptacle outlet and can serve only one appliance or fixture not rated with a capacity higher than the cord. Cords should be rated for a 15 amp service. Cords must be maintained in good condition without splices, deterioration or damage and must not be subject to environmental damage or physical defect. Make sure that all electrical appliances and cords are in good condition and UL approved. Do not overload electrical outlets. Use fuse-protected multi-outlet power strips and extension cords when necessary.

Do not tamper with or cover smoke detectors, or remove batteries from smoke detectors. Doing so will result in fines and possible judicial conduct proceedings.

Many electrical appliances can be fire hazards. Do not leave coffee pots, irons or other such appliances unattended, even for short periods of time.

The following are not permitted in Saint Martin's residence halls:

- Open-element appliances such as hot plates, space heaters or toasters;
- Candles, incense or other items with an open flame;
- Fireworks or other explosives. These items are prohibited on University property.

Propping open fire doors will result in disciplinary action, which may include a \$50 fine.

Extinguish all smoking materials properly and thoroughly. Never store flammable substances in your room or apartment. Unauthorized use of candles and live holiday decorations is not permitted in University buildings. Be aware that transmitting a false alarm is a criminal offense that endangers the lives of both building occupants and emergency personnel. It is also an offense to prop open fire doors or to tamper in any way with alarm equipment, electromagnetic locks, or other life safety devices or to block or obstruct paths of egress.

What to Do in Case of Fire

If you discover a fire in a campus building:

- Immediately pull the nearest fire alarm as you exit the building.
- When evacuating the building, remember to feel doors before opening them to be sure there is no fire danger on the other side. If you must enter a smoke-filled room or hallway, stay low, keeping one hand on the wall to avoid disorientation and crawl to the nearest exit, keeping your head near the floor.

- Once you are safely away from danger, call the emergency number for your campus to report the fire. If you are off campus, dial 911.
- Leave the building at once but stand by to direct emergency teams to the location of the fire.

Fire Response Dos and Don'ts

- DO treat every alarm as an emergency. If an alarm sounds, exit the building immediately.
- DON'T assume that a fire alarm is a drill or test. All building alarm systems are tested as required by law, but these tests are announced in advance.
- DO remain in your room if you cannot get out of the building because of heat or smoke.
- Call Public Safety right away. Keep the door closed and await assistance from the Fire Department. If smoke is entering around the door, stuff the crack under the door with sheets, clothes, or blankets. If possible, open the window and wave a brightly colored garment or towel from your window—the Fire Department will be looking for this sign.
- DO close the door behind you if it is safe to leave your room.
- DON'T waste time collecting personal valuables. Take your keys so that you can reenter your room if exit from the building is not possible.
- DON'T use an elevator during a fire emergency: always use the fire stairs.
- DO make your presence known to other occupants and to Public Safety by telephone if you are injured or disabled. Emergency staff members will assist you in leaving the building.

APPENDIX 1

Definitions of Reportable Crimes

Aggravated Assault: An unlawful attack by one person upon another for the purpose of inflicting severe or aggravated bodily injury. This type of assault usually is accompanied by the use of a weapon or by a means likely to produce death or great bodily harm. (It is not necessary that injury result from an aggravated assault when a gun, knife, or other weapon is used that could and probably would result in serious personal injury if the crime were successfully Completed.)

Arson: Any willful or malicious burning or attempt to burn, with or without intent to defraud, a dwelling house, public building, motor vehicle or aircraft, personal property of another, etc.

Burglary: The unlawful entry of a structure to commit a felony or theft. For reporting purposes this definition includes unlawful entry with intent to commit a larceny or felony, breaking and entering with intent to commit a larceny, housebreaking, safecracking, and all attempts to commit any of the aforementioned acts.

Drug Law Violations: The violation of laws prohibiting the production, distribution and/or use of certain controlled substances and the equipment or devices utilized in their preparation and/or use. The unlawful cultivation, manufacture, distribution, sale, purchase, use, possession, transportation or importation of any controlled drug or narcotic substance. Arrest for violations of state and local laws, specifically those related to the unlawful possession, sale, use, growing, manufacturing and making of narcotic drugs. The relevant substances include: opium or cocaine and their derivatives (morphine, heroin, codeine); marijuana; synthetic narcotics-manufactured narcotics which can cause true addiction (Demerol, methadone); and dangerous non-narcotic drugs (barbiturates, Benzedrine).

Forcible Fondling: The touching of the private body parts of another person for the purpose of sexual gratification, forcibly and/or against that person's will; or, not forcibly or against the person's will where the victim is incapable of giving consent because of his/her youth or because of his/her temporary or permanent mental incapacity.

Forcible Rape: The carnal knowledge of a person, forcibly and/or against that person's will; or not forcibly or against the person's will where the victim is incapable of giving consent because of his/her temporary or permanent mental or physical incapacity (or because of his/her youth).

Forcible Sodomy: Oral or anal sexual intercourse with another person, forcibly and/or against that person's will; or not forcibly against the person's will where the victim is incapable of giving consent because of his/her youth or because of his/her temporary or permanent mental or physical incapacity.

Incest: Non-forcible sexual intercourse between persons who are related to each other within the degrees wherein marriage is prohibited by law.

Liquor Law Violations: The violation of laws or ordinances prohibiting the manufacture, sale, transporting, furnishing, possessing of intoxicating liquor; maintaining unlawful drinking places; bootlegging; operating a still; furnishing liquor to a minor or intemperate person; using a vehicle for illegal transportation of liquor; drinking on a train or public conveyance; and all attempts to commit any of the aforementioned activities. (Drunkennes and driving under the influence are not included in this definition.)

Motor Vehicle Theft: The theft or attempted theft of a motor vehicle. (Classify as motor vehicle theft all cases where automobiles are taken by persons not having lawful access even though the vehicles are later abandoned, including joyriding.)

Murder and Non-negligent Manslaughter: The willful (non-negligent) killing of one human being by another.

Negligent Manslaughter: The killing of another person through gross negligence.

Robbery: The taking or attempting to take anything of value from the care, custody, or control of a person or persons by force or threat of force or violence and/or by putting the victim in fear.

Sex Offenses—Forcible: Any sexual act directed against another person, forcibly and/or against that person's will; or not forcibly or against the person's will where the victim is incapable of giving consent.

Sex Offenses—Non-forcible: Unlawful, non-forcible sexual intercourse.

Sexual Assault with an Object: The use of an object or instrument to unlawfully penetrate, however slightly, the genital or anal opening of the body of another person, forcibly and/or against that person's will; or not forcibly or against the person's will where the victim is incapable of giving consent because of his/her youth or because of his/her temporary or permanent mental or physical incapacity.

Statutory Rape: Non-forcible sexual intercourse with a person who is under the statutory age of consent.

Weapon Law Violations: The violation of laws or ordinances dealing with weapon offenses, regulatory in nature, such as manufacture, sale, or possession of deadly weapons; carrying deadly weapons, concealed or openly; furnishing deadly weapons to minors; aliens possessing deadly weapons; and all attempts to commit any of the aforementioned acts.

Additional Clery Act Hate Crime Definitions:

Definitions

In addition to any of the crimes above, the following acts are now reportable as Hate Crimes under the Clery Act, when motivated by prejudice on account of race, gender, religion, sexual orientation, ethnicity, or disability.

Larceny-Theft: The unlawful taking, carrying, leading, or riding away of property from the possession or constructive possession of another.

Simple Assault: An unlawful physical attack by one person upon another where neither the offender displays a weapon, nor the victim suffers obvious severe or aggravated bodily injury involving apparent broken bones, loss of teeth, possible internal injury, severe laceration, or loss of consciousness.

Intimidation: To unlawfully place another person in reasonable fear of bodily harm through the use of threatening words and/or other conduct, but without displaying a weapon or subjecting the victim to actual physical attack.

Destruction/Damage/Vandalism of Property (Except "Arson"): To willfully or maliciously destroy, damage, deface, or otherwise injure real or personal property without the consent of the owner or the person having custody or control of it.

Clery Definitions:

ON CAMPUS - Is what most people traditionally think of as the main part or core of an institution. It means: 1) Any building or property owned or controlled by an institution within the same reasonably contiguous geographic area and used by the institution in direct support of, or in a manner related to, the institution's educational purposes, including Residence Halls; and 2) Any building or property within or reasonably contiguous to the main or core property, owned by the institution but controlled by another person, is frequently used by students, and supports institutional purposes (such as a food vendor or other retail vendor).

NON CAMPUS BUILDING OR PROPERTY - Means any building or property owned or controlled by a student organization officially recognized by the institution; or Any building or property owned or controlled by an institution used in direct support of, or in relation to, the institution's educational purposes, is frequently used by students, and is not within the same reasonably contiguous geographic area of the institution; includes branch campus locations at other institutions and Joint Base Lewis/McChord.

PUBLIC PROPERTY - Public property means all public property, including thoroughfares, streets, sidewalks, and parking facilities, within the campus, or immediately adjacent to and accessible from the campus.

The *Clery Act* requires institutions to disclose three general categories of crime statistics:

- 1. Types of Offenses** - Criminal Homicide, including a) murder and non-negligent manslaughter, and b) negligent manslaughter; Sex Offenses including; a) forcible, and b) non-forcible; Robbery; Aggravated Assault; Burglary; Motor Vehicle Theft; and Arson.
- 2. Hate Crimes** - Included in any of the above listed types of offenses or any other crime involving bodily injury with evidence the victim was intentionally selected because of the perpetrator's bias.
- 3. Arrests and Referrals for Disciplinary Action** - of illegal weapons possession, violation of state/federal drug and liquor laws.

APPENDIX 2

SAINT MARTIN'S UNIVERSITY CRIME STATISTICS 2008-2010

	TOTAL CRIMINAL OFFENSES <u>ON</u> <u>CAMPUS</u>			TOTAL CRIMINAL OFFENSES <u>IN</u> <u>RESIDENCE HALLS</u>			TOTAL CRIMINAL OFFENSES <u>NON</u> <u>CAMPUS</u>			TOTAL CRIMINAL OFFENSES <u>ON</u> <u>PUBLIC PROPERTY</u>		
	2008	2009	2010	2008	2009	2010	2008	2009	2010	2008	2009	2010
CRIMINAL OFFENSES												
Murder/Non-negligent manslaughter	0	0	0	0	0	0	0	0	0	0	0	0
Negligent manslaughter	0	0	0	0	0	0	0	0	0	0	0	0
Sex Offenses - Forcible	3	1	3	2	1	3	0	0	0	0	0	0
Sex Offenses - Non-forcible	0	0	0	0	0	0	0	0	0	0	0	0
Robbery	0	0	0	0	0	0	0	0	0	0	0	0
Aggravated assault	0	0	0	0	0	0	0	0	0	0	0	0
Burglary	5	6	7	3	3	4	1	0	0	0	0	0
Motor vehicle theft	1	2	0	0	1	0	0	0	0	0	0	0
Arson	0	0	0	0	0	0	0	0	0	0	0	0
HATE CRIMES												
Murder/Non-negligent manslaughter	0	0	0	0	0	0	0	0	0	0	0	0
Negligent manslaughter	0	0	0	0	0	0	0	0	0	0	0	0
Sex Offenses - Forcible	0	0	0	0	0	0	0	0	0	0	0	0
Sex Offenses - Non-forcible	0	0	0	0	0	0	0	0	0	0	0	0
Robbery	0	0	0	0	0	0	0	0	0	0	0	0
Aggravated assault	0	0	0	0	0	0	0	0	0	0	0	0
Burglary	0	0	0	0	0	0	0	0	0	0	0	0
Motor vehicle theft	0	0	0	0	0	0	0	0	0	0	0	0
Arson	0	0	0	0	0	0	0	0	0	0	0	0
Larceny-Theft			0			0			0			0
Simple Assault			0			0			0			0
Intimidation			1			0			0			0
Destruction/damage/vandalism of property			0			0			0			0
ARRESTS												
Illegal weapons possession	0	0	0	0	0	0	0	0	0	0	0	0
Drug law violations	9	0	2	9	0	0	0	0	0	0	0	0
liquor law violations	1	0	3	1	0	0	0	0	0	0	3	0
DISCIPLINARY ACTIONS												
Illegal weapons possession	0	3	0	0	3	0	0	0	0	0	0	0
Drug law violations	14	17	10	14	17	9	0	0	0	5	0	0
liquor law violations	47	47	14	47	45	13	0	0	0	0	0	0

APPENDIX 3

2010 DESCRIPTION OF STUDENT HOUSING FIRE DETECTION AND SUPPRESSION SYSTEMS

BUILDING	BUILDING FIRE ALARM	ROOM DETECTION	SPRINKLER	FIRE DRILLS CONDUCTED
Parsons Hall	Yes	Yes	Yes	2
Spangler Hall	Yes	Yes	Yes	2
Burton Hall	Yes	Yes	No	2
Baran Hall	Yes	Yes	Yes	2

APPENDIX 4

2010 TOTAL NUMBER OF FIRES BY RESIDENCE HALL

Building	Total Fires in Each Building	Fire Number	Date	Time	Cause of Fire	Number of Injuries Required Treatment at a Medical Facility	Number of Deaths Related To Fire	Value of Property Damage Caused By Fire	Case Number
Parson Hall	0	0				0	0	0	
Spangler Hall	0	0				0	0	0	
Burton Hall	0	0				0	0	0	
Baran Hall	0	0				0	0	0	